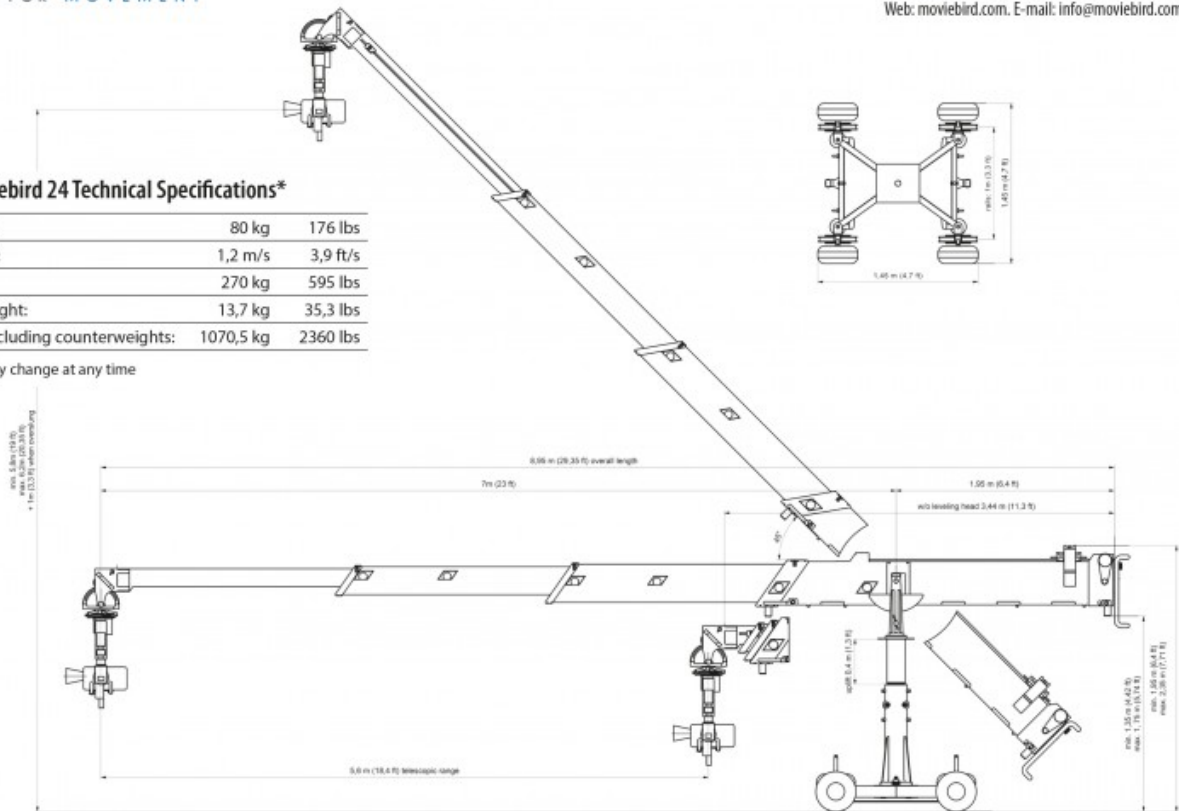


Moviebird 24 Technical Specifications*

Max. nose load:	80 kg	176 lbs
Max. arm speed:	1,2 m/s	3,9 ft/s
Arm weight:	270 kg	595 lbs
One counterweight:	13,7 kg	35,3 lbs
Crane weight including counterweights:	1070,5 kg	2360 lbs

* Specifications may change at any time



The MovieBird24 is a versatile telescopic crane suitable for any film set or TV studio. The crane is universal in use and depending on the weight of the camera package. The MovieBird24 is the next generation crane also having a state-of-the-art patented safety belt transmission.

SPECS

Max Payload (Head + Camera)	80 kg (176.37 lbs)
Max Length (Pivot to Front End)	7 m (22.97 ft)
Min Length (Pivot to Front End)	1.49 m (4.88 ft)
Rear Section Length (Pivot to Rear End)	1.95 m (6.40 ft)
Max Lens Height Overslung	7.2 m (23.62 ft)
Max Lens Height Underslung	6.2 m (20.34 ft)
Telescopic Travel	5.6 m (18.37 ft)
Telescopic Travel Speed	1.2 m/s (3.9 ft/s)
Total Maximum Weight	1070 kg (2360 lbs)
Footprint 360° Length	5 m (16.4 ft)

Footprint 360° Width	5 m (16.4 ft)
Footprint 180° Length	5 m (16.4 ft)
Footprint 180° Width	3 m (9.84 ft)
Power Requirement	220 V, 16 Amp
Weather Proof	Yes
Raincover	Yes
Track Wheels	Yes
Track Size	620/1000 mm (24.41/39.37 inch)