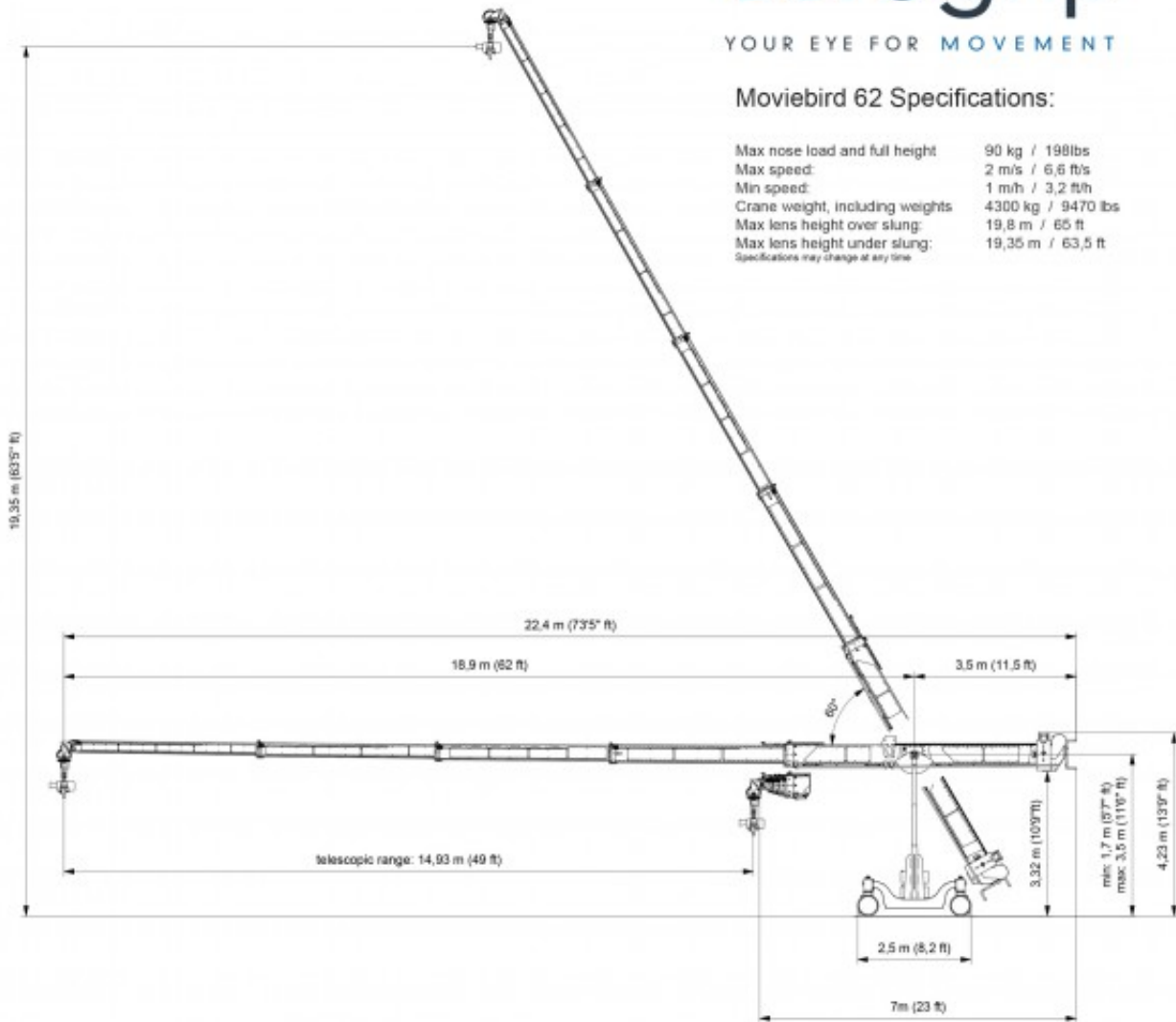




Moviebird 62 Specifications:

Max nose load and full height	90 kg / 198lbs
Max speed:	2 m/s / 6,6 ft/s
Min speed:	1 m/h / 3,2 ft/h
Crane weight, including weights	4300 kg / 9470 lbs
Max lens height over slung:	19,8 m / 65 ft
Max lens height under slung:	19,35 m / 63,5 ft

Specifications may change at any time



The MovieBird 62 is an extremely versatile telescopic camera crane suitable for working on any film set, TV studio or sports arena. The MovieBird 62 is easy to operate and will carry all types of camera packages up to 90 kg in weight.

Despite the MovieBird 62's reach of 62 ft , it can be transported in a standard truck.

SPECS

Max Payload (Head + Camera)	90 kg (198 lbs)
Max Length (Pivot to Front End)	18.9 m (62 ft)
Min Length (Pivot to Front End)	3.97 m (13.02 ft)
Rear Section Length (Pivot to Rear End)	3.5 m (11.48 ft)
Max Lens Height	20.35 m (66.77 ft)

Overslung	
Max Lens Height Underslung	19.35 m (63.48 ft)
Telescopic Travel	14.93 m (48.98 ft)
Telescopic Travel Speed	1.9 m/s (6.23 ft/s)
Dolly Length	2.5 m (8.2 ft)
Dolly Width	1.6 m (5.25 ft)
Total Maximum Weight	4580 kg (10097 lbs)
Footprint 360° Length	8 m (26.25 ft)
Footprint 360° Width	8 m (26.25 ft)
Footprint 180° Length	8 m (26.25 ft)
Footprint 180° Width	5 m (16.40 ft)
Min Door Width	1.7 m (5.58 ft)
Min Door Height	2.25 m (7.38 ft)
Power Requirement	220 V, 16 Amp
Weather Proof	Yes
Raincover	Yes
Track Wheels	No